

Energy Conservation Initiative (ECI) Project Summary

Statler Hall, Facility 2033

What We Did: The project replaced outdated controls in 12 air handling systems to improve operation and minimize outside air. All kitchens were retrofit with hood controls that modulate airflow based on cooking needs. New coordinated digital room control was installed in two dining areas and the ballroom.

What It Cost: \$1,000,000 (\$375,000 NYSERDA ARRA grant received)

How Long It Took: 12 months. Completed July 2012.

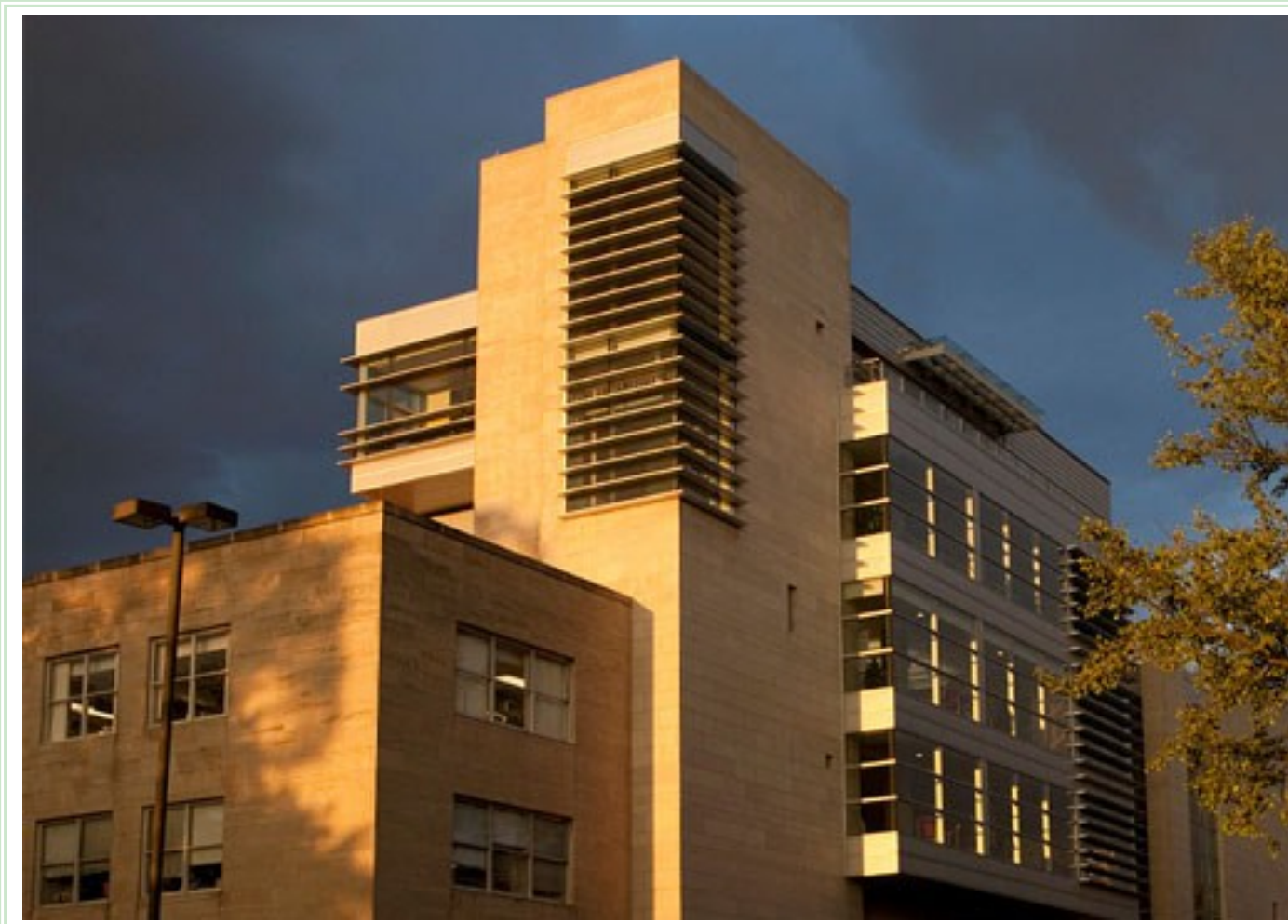
What We Saved: \$220,000 annually

Benefits: Before the project, air handling unit controls were operating poorly and kitchen hoods ran nearly continuously. The new controls allow proper operation, use of occupancy schedules, and match ventilation air to kitchen operations. New space temperature and lighting controls stop unwanted energy usage. Maintenance efforts are significantly reduced and are more productive.

The upgraded controls have enabled us to better operate our facility while reducing the buildings overall energy use.

Peter Meixell
Facilities Manager

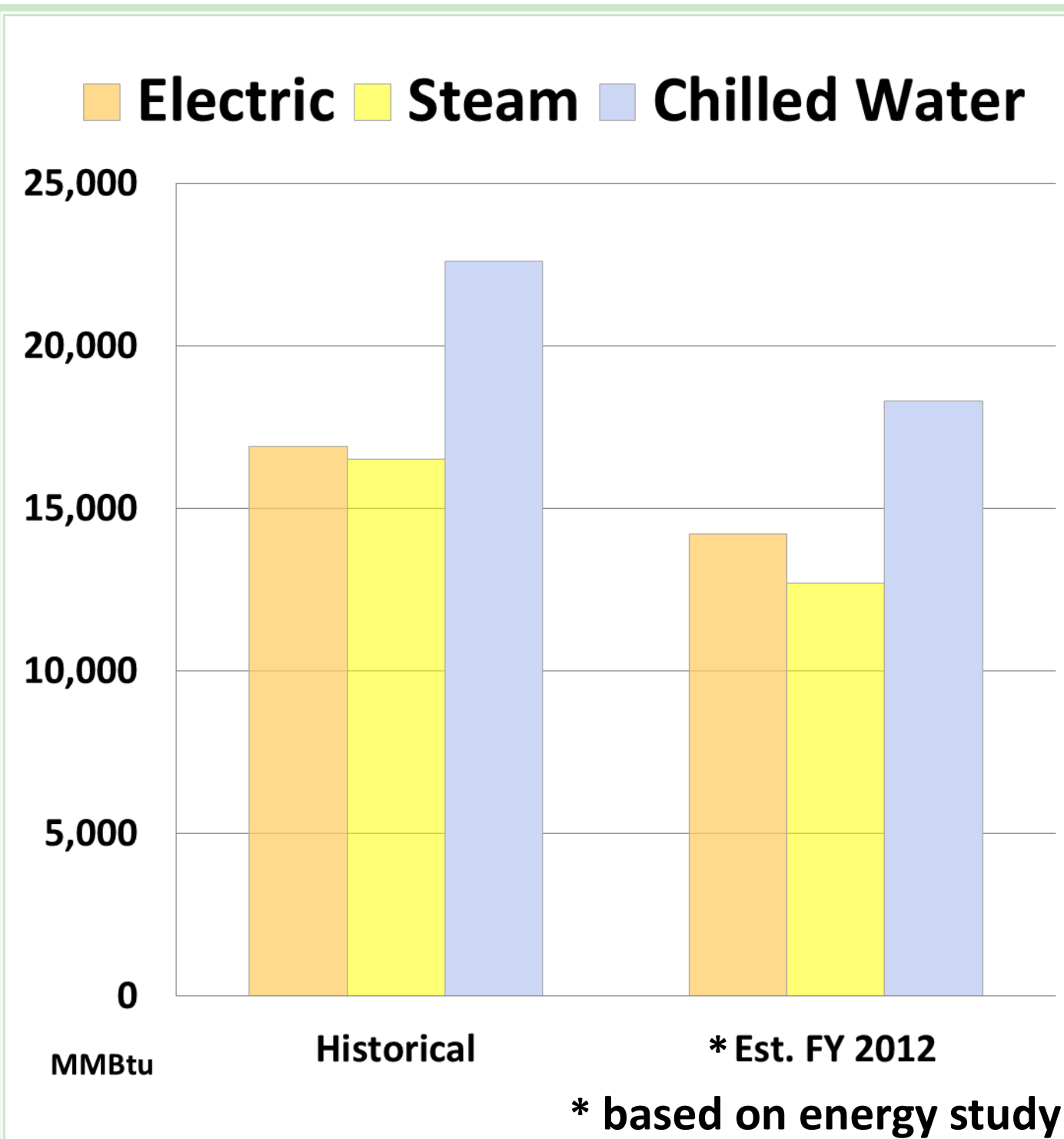
Statler Hall



[Map](#)

[Statler Hall Utilities Costs and Use](#)

Statler Hall Total Energy Use Pre & Post ECI



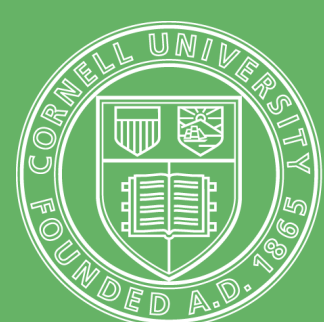
Statler Hall: ECI Savings Table

| Utility | Historical Energy Use (MMBtu) | Est. FY 2012 Energy Use (MMBtu) | Energy Savings (MMBtu) | % REDUCTION | Historical Cost (billed rates) | *Est. FY 2012 Cost (billed) | Annual Savings \$ | Equivalent # Homes |
|---------------|-------------------------------|---------------------------------|------------------------|-------------|--------------------------------|-----------------------------|-------------------|--------------------|
| Electric | 16,900 | 14,200 | 2,700 | 16% | \$347,000 | \$290,000 | \$55,000 | 68 |
| Steam | 16,500 | 12,700 | 3,800 | 23% | \$373,000 | \$287,000 | \$86,000 | 42 |
| Chilled Water | 22,600 | 18,300 | 4,300 | 19% | \$414,000 | \$335,500 | \$79,000 | 86 |
| Totals | 56,000 | 45,200 | 10,800 | 19% | \$1,134,000 | \$914,000 | \$220,000 | 196 |

Energy use based on project scope



Equivalent # Homes Savings based on average home use: 40 MMBtu Electric ▪ 90 MMBtu Heat ▪ 50 MMBtu Cooling



Cornell University

Energy and Sustainability
energyandsustainability.fs.cornell.edu

2/2013

